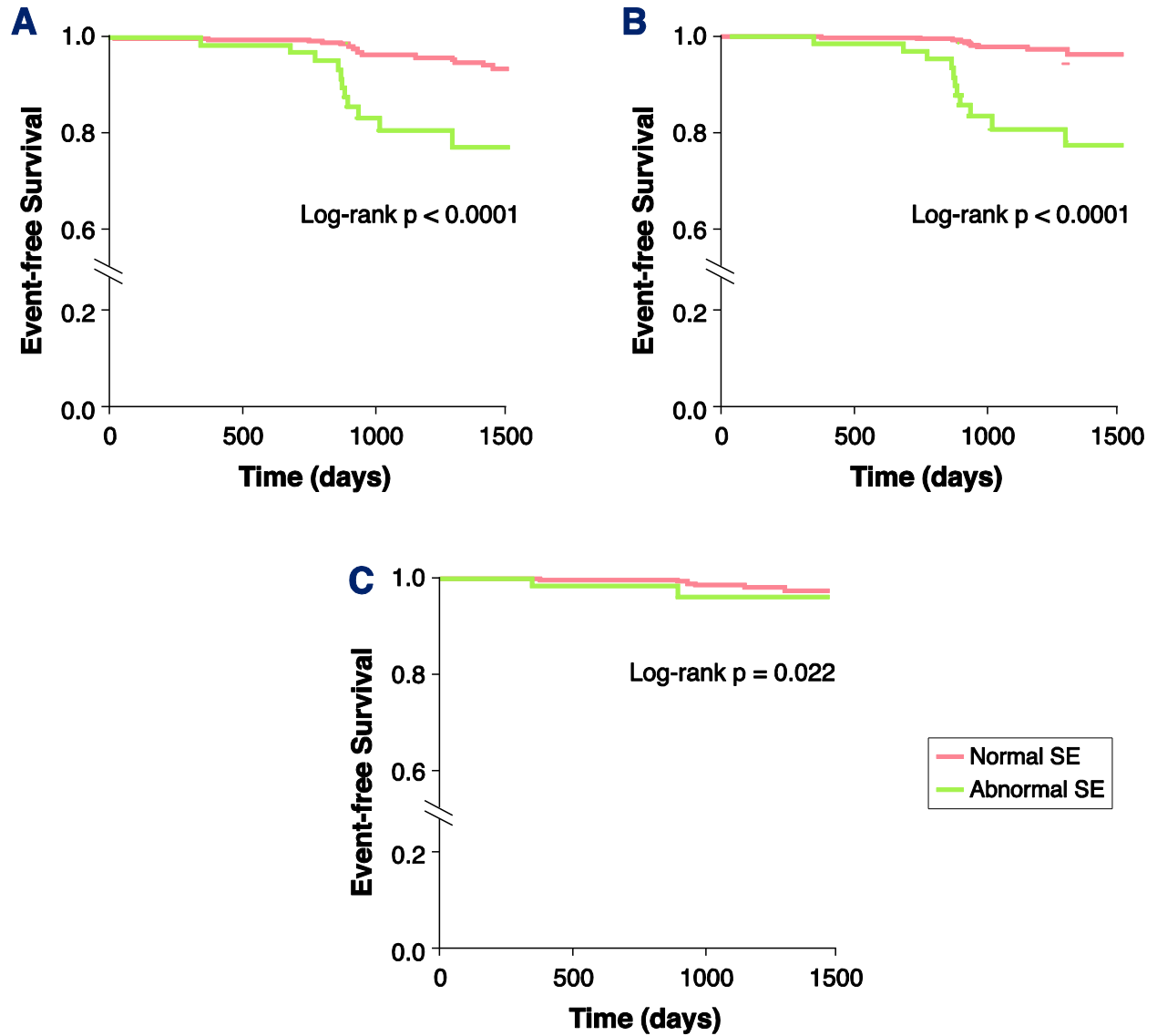


Supplemental Figure 1. Kaplan-Meier curves based on SE results for the prediction of:

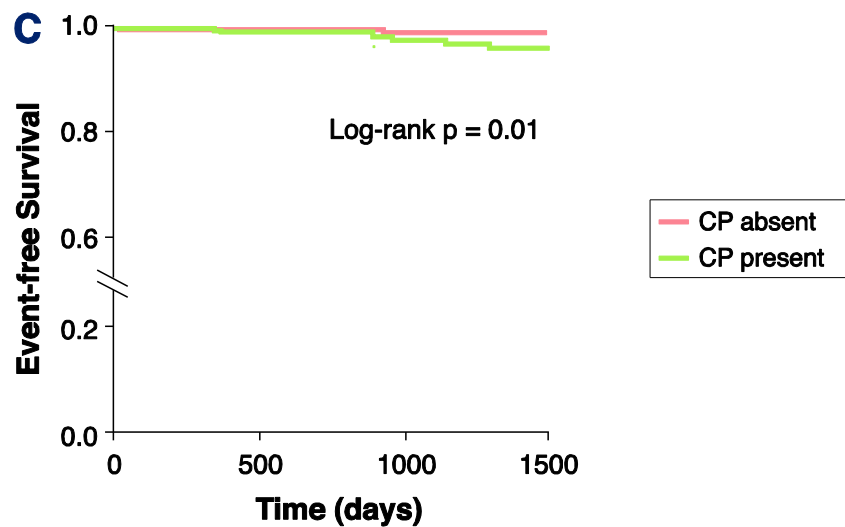
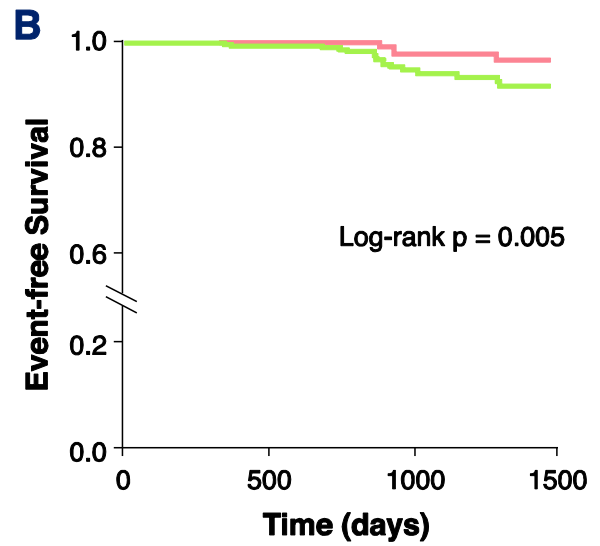
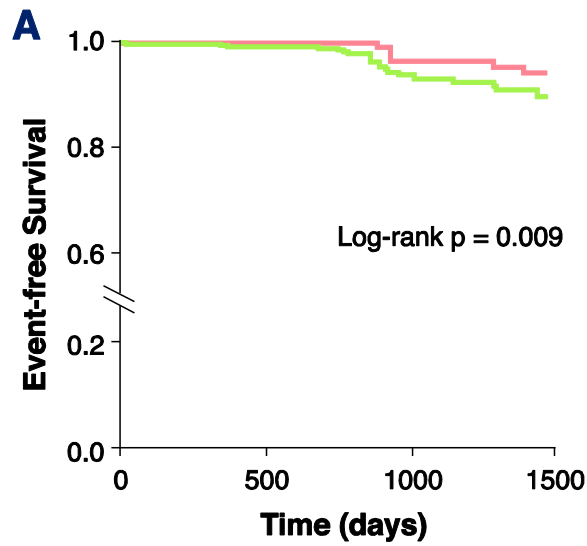
- A. major adverse events (MAE)
- B. major adverse cardiac events (MACE)
- C. hard cardiac adverse events

SE: stress echocardiography



Supplemental Figure 2. Kaplan-Meier curves based on carotid ultrasound results for the prediction of:

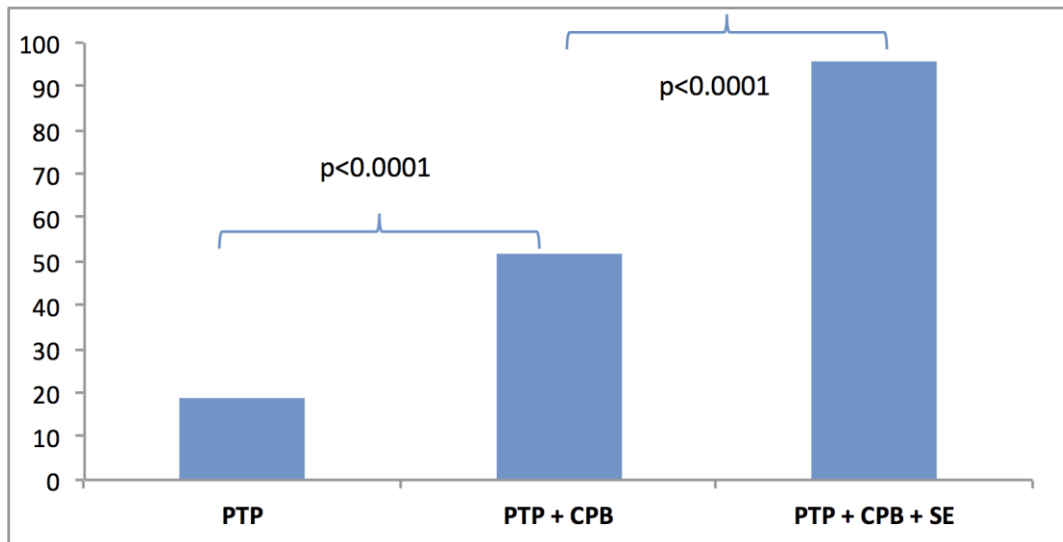
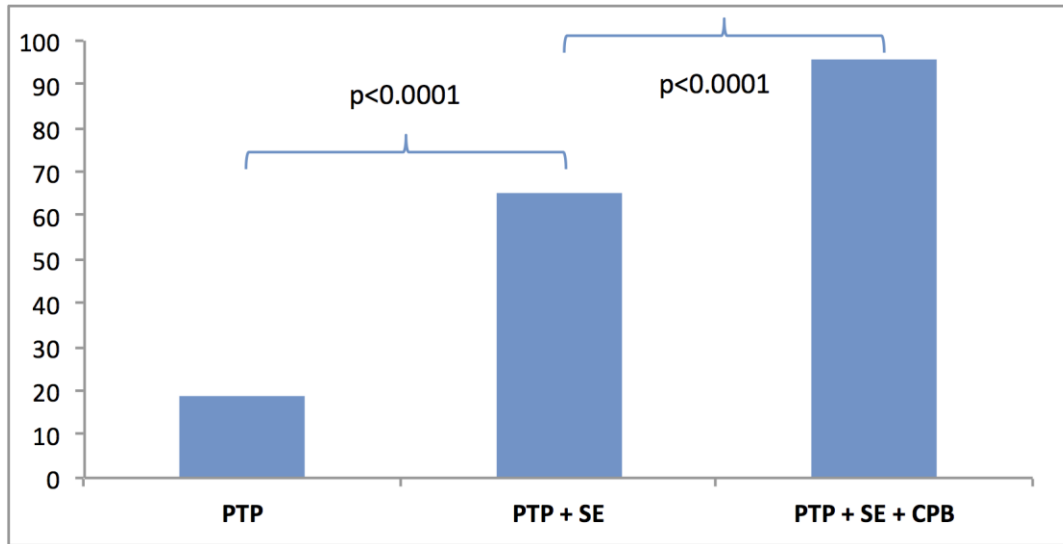
- A. major adverse events (MAE)
- B. major adverse cardiac events (MACE)
- C. hard cardiac adverse events



Supplemental Figure 3 Incremental value of PTP-CAD, SE and CPB

A. When prognosis was assessed in a hierarchical manner as done clinically (pre-test probability [PTP] followed by stress echocardiography [SE] and carotid plaque burden [CPB]), it showed significant increment in the global chi-square for the prediction of a major cardiac adverse event.

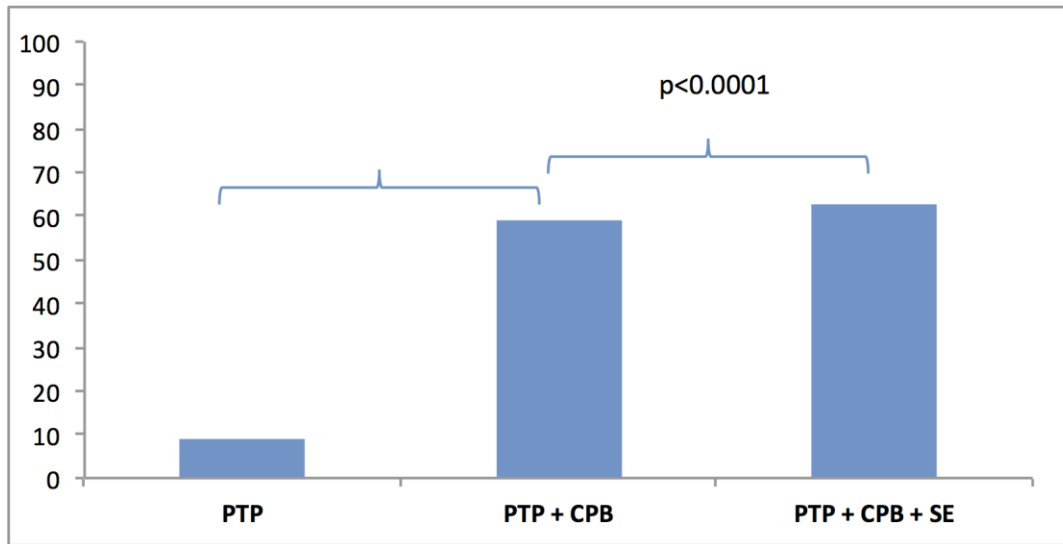
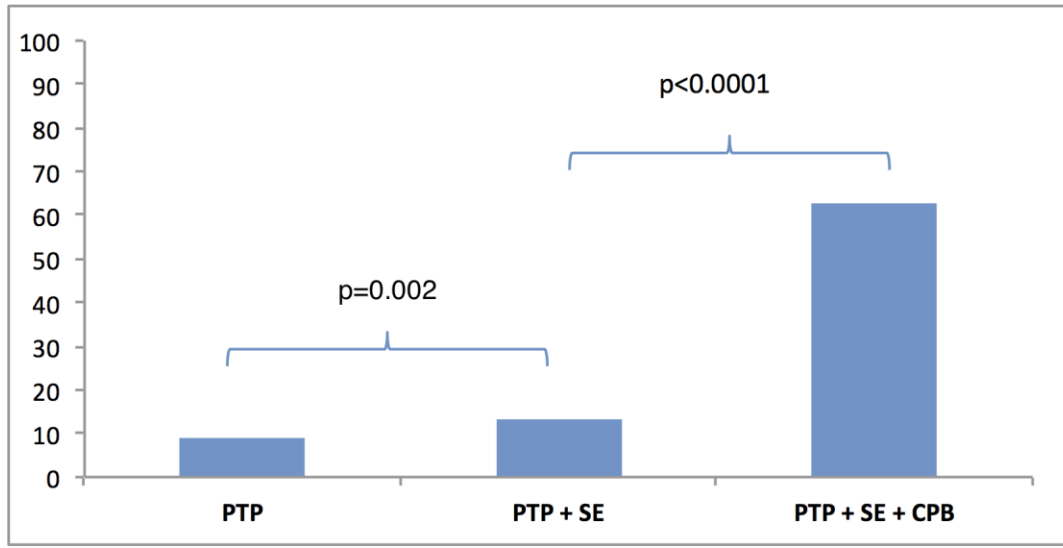
B. Similar increments in the global chi-square were observed when CPB was assessed after PTP followed by SE.



Supplemental Figure 4 Incremental value of PTP-CAD, SE and CPB

A When prognosis was assessed in a hierarchical manner as done clinically (pre-test probability [PTP] followed by stress echocardiography [SE] and carotid plaque burden [CPB]), it showed significant increment in the global chi-square for the prediction of a hard event.

B Similar increments in the global chi-square were observed when CPB was assessed after PTP followed by SE.



Supplementary Table 1. Cox regression analysis in patients with intermediate pre-test probability of coronary artery disease for the prediction of

A. major adverse events (MAE)

	Univariable Analysis p value	Multivariable Analysis p value	HR	95% CI
SE result	<0.0001	<0.0001	4.51	2.17-9.41
CPB	<0.0001	<0.0001	1.27	1.12-1.45

B. major adverse cardiac events (MACE)

	Univariable Analysis p value	Multivariable Analysis p value	HR	95% CI
Statin	0.028	0.12		
SE result	<0.0001	<0.0001	6.64	2.97-14.83
CPB	<0.0001	<0.0001	1.36	1.18-1.56

C. Hard cardiac events: Cardiac mortality + AMI

	Univariable	Multivariable	HR	95% CI
	Analysis	Analysis		
	p value	p value		
SE result	0.003	0.033	4.15	1.12-15.34
CPB	<0.0001	<0.0001	1.59	1.28-1.97

CI: Confidence interval, CPB: Carotid plaque burden, HR: Hazard ratio, PTP: pre-test probability, SE: Stress echocardiography