

## CORRECTIONS

De Lazzari M, Cipriani A, Rizzo S, Famoso G, Giorgi B, Tarantini G, Thiene G, Tona F, Iliceto S, Basso C, Perazzolo Marra M

### Right Ventricular Junctional Late Gadolinium Enhancement Correlates With Outcomes in Pulmonary Hypertension

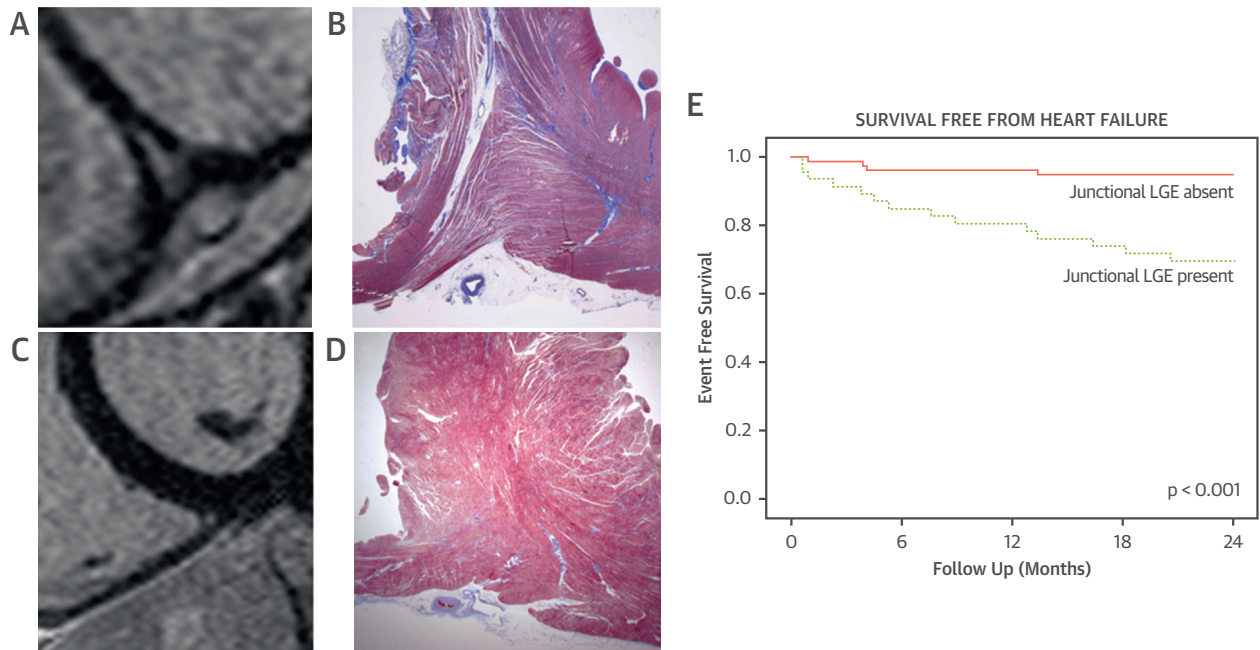
J Am Coll Cardiol Img 2019;12:936-8.

In Figure 1, the label of the Kaplan-Meier survival curve is inverted, however, the text is correct.

The correct figure is printed below.



**FIGURE 1** Histological Basis of Junctional LGE in Nonischemic Dilated Cardiomyopathy



**(A)** Post-contrast cardiac magnetic resonance (CMR) short-axis view showing junctional late gadolinium enhancement (LGE). **(B)** Same-patient post-mortem histology that shows marked interstitial expansion in the junctional region due to edema in the setting of fatty tissue and myocytes disarray. **(C)** Healthy subject without junctional LGE on CMR. **(D)** Histology of the junctional region in a normal heart that shows almost absent interstitial space expansion. **(E)** Kaplan-Meier survival curve according to the presence of junctional and nonjunctional LGE of survival free from heart failure.

The authors apologize for this error.

The online version has been updated.

<https://doi.org/10.1016/j.jcmg.2019.05.012>